

CC07 Touch Screen Thermostat for Fan Coil Unit

[General]

- The digital thermostats are designed for fan or valves or cold or heat system.
- It is used to control room temperature in industrial, commercial and residential environment via controlling electric modulating valve or damper with 0-10C (2-10VDC) signal or floating control.
- Digital display of sensing temperature and user selected temperature setting on demand, easy for use.
- Large LCD display with green or blue or white backlight
- The fan speed can be set to automatic or manual three speed mode.
- Model available for built-in or remote sensor (RS) function (option).
- Adjustable maximum and minimum set point limits (option)..
- Control off output and show temperature value when system switch at "OFF" position.

[Technical parameters]

- Power Supply: 230VAC(24± 10% Optional), 50/60 Hz
- Output levels: 0-10VDC,2-10VDC special 24VDC/80mA for actuator [Only for XY]
- Set point Range: 5 to 35°C (programmable)
- Display Range: 0 to 40.0°C
- Sensor: NTC B=3380 10k @25 degrees Celsius
- Setting Unit: 0.5°C / step
- Indication Accuracy: 0.1°C

[Operation Guide]

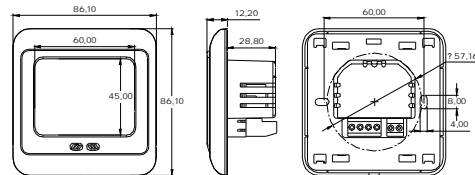
- Press you can turn on or turn off the power,
- In the shutdown state, it displays the current room temperature.
- The temperature setting: press or can set the user need temperature.
- The cooling setting: turn on the display will gleam **CH** keep pressing until gleaming. It will be confirmed after 5 seconds.
- The heating setting: turn on the display will gleam **CH** keep pressing until gleaming. It will be confirmed after 5 seconds.
- The wind speed selection: turn on to choose the wind speed, the display will gleam **SP**. press or can set [high] [middle] [low] and [automatism]
- Under the mode of automatism, the wind speed will switch automatically according the setting value and the measurement value.
- The timing setting: setting only by the remote-control.

[Icon]

	Fan speed switch
	Cooling or heating select
	Power switch
	Actuator on
	fan speed status L-M-H-Auto
	Up / down key

[Product Dimensions]

unit: mm



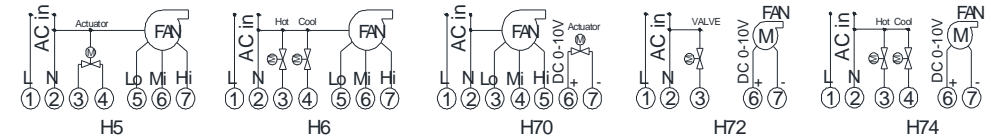
[System Menu]

Warning: System setting is used to set some important parameters of the system, that's only for professionals. Do not make any improper modification. The item already been debugged and tested by professionals, there is no need to reset.

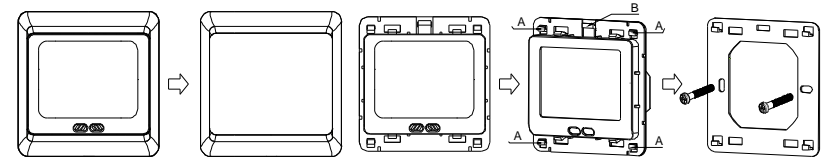
Enter the system setting: Press to switch on the thermostat when the unit is turned off. Within the next second please press Key as soon, you will enter into system setting. You can press to switch the system parameters. At the same time press or to modify settings. Select a set value. If you do not press the or , the parameters would not be modified. If you want to save the data, you must go through all the functions then exit the system menu. Note: the parameters **out** and **Pr** and **It** are applicable to H70 H72 H74

Display	Setting	Rang	The default value
AdJ	temperature correction	-5 ~ 5	-2.5
Sat	Status at re-power	OFF: off status at every time On: the same as previous,	OFF
Fn	The fan is controlled	OFF: Valve stop and fan stop On: Stop valve, fan speed slowly,	ON
dt	sensor hysteresis	0.5 ~ 5	1.0
bL	Backlighting status	On: Always on OFF : Auto turn off after 5sec	OFF
out	The output signal range	0-10VDC / 2-10VDC	0-10VDC
Pr	Proportional band	Temperature is 2.0 to 6.0 degrees for 0-10v or 2-10v	3.0 degrees
It	Integration time	OFF: close the integrator 30-250 seconds	60 seconds
deF	Restore factory settings	Restore factory settings	Restore

[Connection Diagram]



[Installation Diagram]



- Step 1: Separate the Polycarbonate Bezel unit from the LCD screen. A: Hook B: Buckle
- Step 2: In Laka buckle, outside at the same time lift up the movement, it is necessary to separate the iron with the movement.
- Step 3: Fixing plate with screws to the wall to ensure that the de-energized state product back wiring diagram connected electrical lines.
- Combinations:** Align the four hooks, press down on the movement, the iron plate with movement combinations, and then fasten the frame

[Warranty service] 24 months warranty service is from date of purchase. Note: The Service Center shall not be liable for any LCD scratch, break or damage to wire, back board, shell power supply board due to loading or installation.

[Sale support] The products of our company may enjoy life-long service in accordance with regulations; the company will make a certain charge to the service out of the warranty period or product quality.